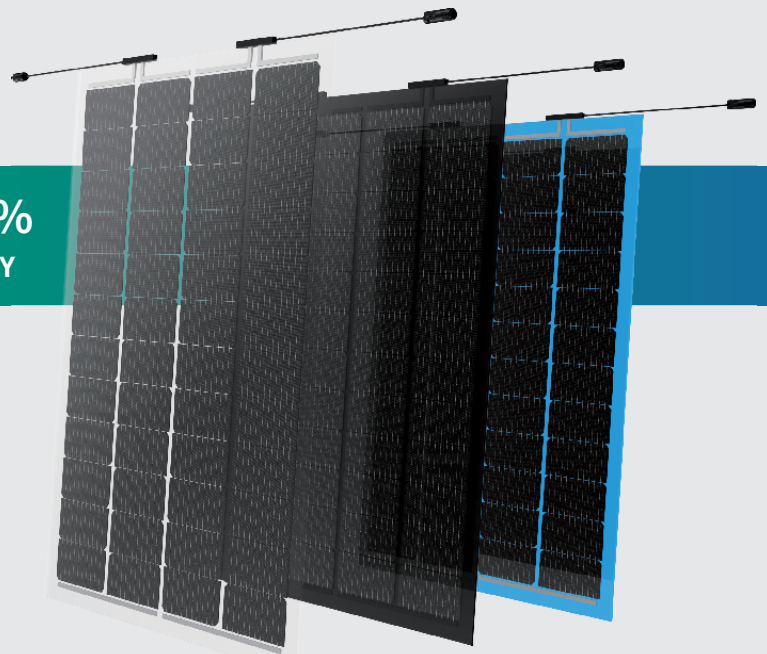


BIPV Curtain Wall Module

CEC6-24MDHV

160~180W
POWER OUTPUT RANGE

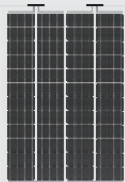
15.9%~17.9%
MODULE EFFICIENCY



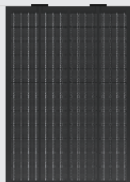
PRODUCT CHARACTERISTICS

- ◆ **Safety, Explosion Prevention and Ultra-long Service Life**
Encapsulated with building encapsulation materials, meeting the double standard requirements of building and PV industries
- ◆ **Large Power Generation**
With crystalline silicon cells, the power generation is larger than that with other material cells.
- ◆ **High Quality in Aesthetics**
Elegant appearance, invisible electrical lines and junction boxes, beautiful appearance without obstruction
- ◆ **Green and Environmental Protection**
Green building material standards, continuous transmission of green energy and creation of value for owners
- ◆ **Perfect Combination of Building Integration**
Customized color, diverse type, and elegant appearance. Used for commercial, agricultural and private houses
- ◆ **Customized**
Appearance and thickness of glass, installation position of junction box, curtain wall structure and module size can be customized

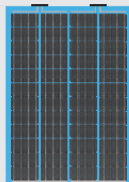
STANDARD COLOR



Transparency



Black



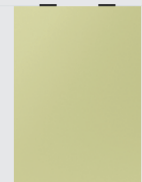
Blue



True blue



True red



True yellow

Color can be customized

Customers can provide color cards or target products



- Relevant parameters of BIPV curtain wall products are determined according to changes in customized information

QUALITY OF CENTRAL ENTERPRISE SERVICE GUARANTEE



Mechanical Characteristics

Cell type	182×91mm monocrystalline silicon cell, a group of 48 cells (4×12)
Glass	High light transmission, low iron. 6/8/10/12mm tempered glass can be customized.
Junction Box	IP Grade: IP68
Encapsulation material	Polyvinyl Butyral (PVB)

Temperature Rating

Nominal Module Operating Temperature (NMOT)	42°C ± 2°C
Maximum Power (Pmax) Temperature Coefficient (δ (%/°C))	-0.34
Open-circuit voltage (Voc) Temperature coefficient (β (%/°C))	-0.26
Short circuit current (Isc) Temperature coefficient (α (%/°C))	0.05

Module parameters (transparent double-glass)

Electrical parameters (Standard test condition)	CEC6-24-160MDHV	CEC6-24-165MDHV	CEC6-24-170MDHV	CEC6-24-175MDHV	CEC6-24-180MDHV
Maximum power-Pmax(Wp)	160	165	170	175	180
Maximum operating voltage -Vmp(V)	27.98	28.41	28.83	29.23	29.62
Maximum operating current -Imp(A)	5.72	5.81	5.90	5.99	6.08
Open-circuit voltage -Voc(V)	33.19	33.63	34.07	34.51	34.95
Short-circuit current -Isc(A)	6.08	6.18	6.28	6.38	6.48
Maximum system voltage -Vdc(V)	1500	1500	1500	1500	1500
Module efficiency(%)	15.9%	16.4%	16.9%	17.4%	17.9%
Power tolerance(W)	0/+5W	0/+5W	0/+5W	0/+5W	0/+5W

Measured values under STC (temperature 25°C, air quality AM1.5, irradiance 1000W/m²)

Limit Parameters

Operating temperature	-40°C to +85°C
Maximum fuse current rating	10A

Physical Parameter

Dimension	1196*843*14mm/1196*843*18mm/ 1196*843*22mm/1196*843*26mm
Cable Length	Customizable
Weight	37/50/60/70Kg

Customized

Glass appearance	LOWE glass, colored glass and easy-cleaning glass
Glass thickness	6mm, 8mm, 10mm and 12mm (glass thickness)
Curtain wall structure	Single power generation curtain wall, hollow power generation curtain wall and laminated hollow power generation curtain wall
Installation position of junction box	Side lead-out, back lead-out
Module size	Customized according to customer requirements



Make Power Generation More Green

No.9,Beishan Road,New District,Zhenjiang, Jiangsu,China 212132

Web: www.cecepsolar.com

